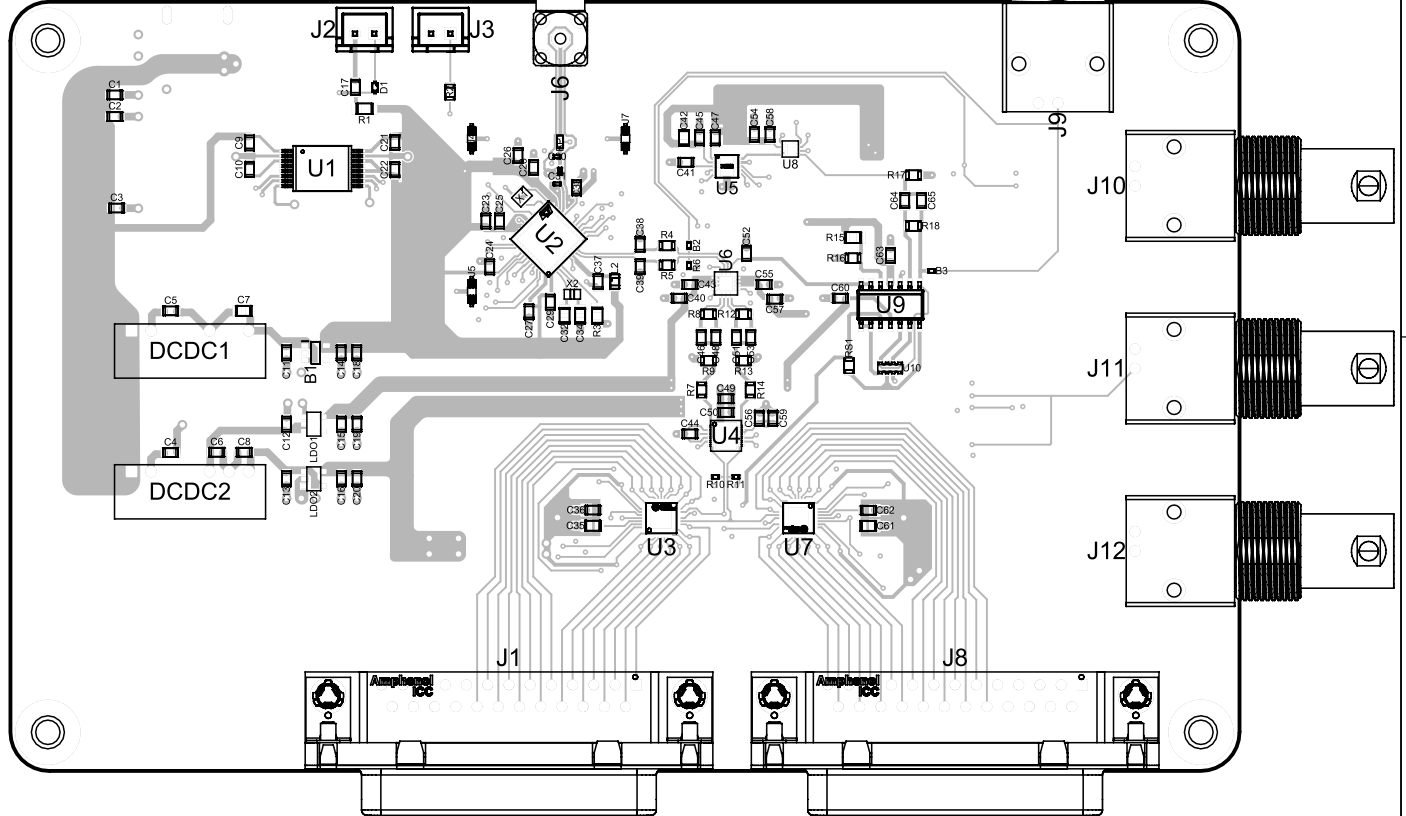
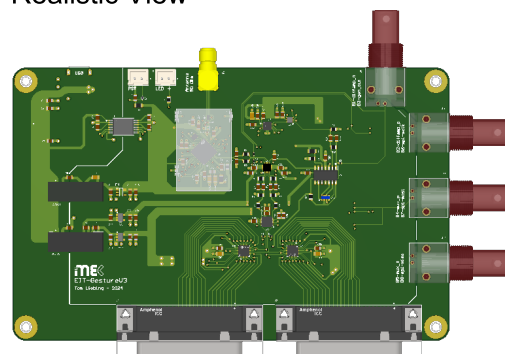




View from Top side (Scale 1:1)



Realistic View



Department M-4	Technical Reference -	Engineer Tom Liebing	Approved by Tom Liebing	
 INSTITUTE FOR MECHANICS IN MECHANICS		Document Number -	Document Status ordered - status: paper	
		Title PCB Overview	Project EITv1	
Hamburg University of Technology			Revision *	Date 23.01.2026
			Lang. en	Sheet 1 / 2

A		B		C		D		
1	Bill Of Materials							1
	Designator		Quantity	Value	Footprint	Name		
	B1		1			XC6222D331MR-G		
	B2, B3, R6, R10, R11, R19, R20, R21		8	0, [NoParam]	0402	100KR2F		
	BP1		1			DLF162500LT-5028A1		
	C1, C10, C14, C15, C17, C20, C22, C23, C24, C26, C27, C29, C33, C36, C37, C40, C41, C45, C47, C50, C52, C55, C56, C58, C60, C62, C63, C67, C69		29	100nF	0805	Capacitor 100nF +/-40% 6.3V 0805		
	C2, C3, C6, C8, C16, C18, C19, C25		8	4.7µF	0805	Capacitor 4.7uF 0805		
	C4, C5		2	220pF	0805	Capacitor 220pF 0805		
	C7, C32, C34, C35, C42, C61, C66, C68		8	10µF	0805	Capacitor 10 uF +/- 10% 16 V 0805		
	C9, C11, C12, C13, C21, C43, C49, C54, C57, C59		10	1µF	0805	Capacitor 1uF 0805		
	C28		1	100pF	0805	Capacitor 100pF +/-20% 25V 0805		
	C30, C31		2	1nF	0805	Capacitor 1nF +/-20% 50V 0402		
	C38, C39		2	1nF	0805	Capacitor 1nF		
	C44		1	180pF	0805	Capacitor 180pF		
	C46, C48, C51, C53, C64, C65		6	510pF	0805	Capacitor 510pF +/-20% 25V 0805		
2	D1		1			BAT54KFILM-corrected		
	D2		1			USBLC6-2SC6		
	DCDC1		1			PEME2-S5-S5-S		
	DCDC2		1			PDME2-S5-D5-S		
	J1, J8		2			ID25S33E4GX00LF		
	J2, J3		2			B2B-XH-A(LF)(SN)		
	J4, J5, J7		3			S0951-46R		
	J6		1			SMA-J-P-H-RA-TH1		
	J9, J10, J11, J12		4			031-5431-10RFX		
	J13		1			105164-0001		
	L1		1	2.7nH		LQG15HS2N7S02D		
	L2		1			MMZ2012S151AT000		
	LDO1		1			XC6901		
	LDO2		1			XC6705		
	R1, R3, R15		3	10k	0805	Resistor 10k +/-1% 0805 125 mW		
R2		1	650	0805	Resistor 650 0805			
R4, R5		2	20	0805	Resistor 20 0805			
R7, R14		2	1k	0805	1KR5J			
R8, R12		2	10.4k	0805	Resistor 10.4k 0805			
R9, R13		2	4.75k	0805	Resistor 4.75k 0805			
R16		1	15.15k	0805	Resistor 15.15k 0805			
R17		1	10k	0805	Resistor 300 0805			
R18		1	26.4k	0805	Resistor 26.4k 0805			
R22		1	100k	0805	Resistor 100k +/-1% 0805 125 mW			
RS1		1	909	0805	Resistor 909 0805			
TP1, TP2, TP3, TP4		4			M4-Hole			
U1		1			XISOUSB111DWXR			
U2		1			STM32WB55CGU6			
U3, U7, U11, U12		4			MAX14661ETI+T			
U4		1			LTC6373IDFM#PBF			
U5		1			AD9837BCPZ-RL7			
U6		1			ADA4945-1ACPZ-R7			
U8		1			MAX5394LATA+T			
U9		1			TLV9164IDR			
U10		1			ACASA1001S1002P100			
X1		1			NX2016SA-32M-EXS00A-CS06465			
X2		1			NX2012SA-32.768K-STD-MUB-1			
Department M-4		Technical Reference -		Engineer Tom Liebing		Approved by Tom Liebing		
 INSTITUTE FOR MECHATRONICS IN MECHANICS		Document Number -				Document Status ordered - status: paper		
		Title PCB Overview				Project EITv1		
		Revision *		Date 23.01.2026		Lang. en	Sheet 2 / 2	
Hamburg University of Technology								